



Salisbury - Ocean City: Wicomico Regional Airport (SBY)



Business & Development Opportunities

- Prime Development Parcels
- Mass Advertising Reach
- Low Rental Rates
- Own or Lease





Airfield Overview



- Maryland's second largest scheduled passenger-served airport
- Enterprise Zone: Real Property & State Income Tax Credits
- Service provided by American Airlines
- Runway length: 6,400' (planned extension to 7,000')
- Nearly 125,000 passengers annually
- Service to Philadelphia & Charlotte
- 150 acre Air Business Park
- Hertz, Avis and Enterprise Rental Car



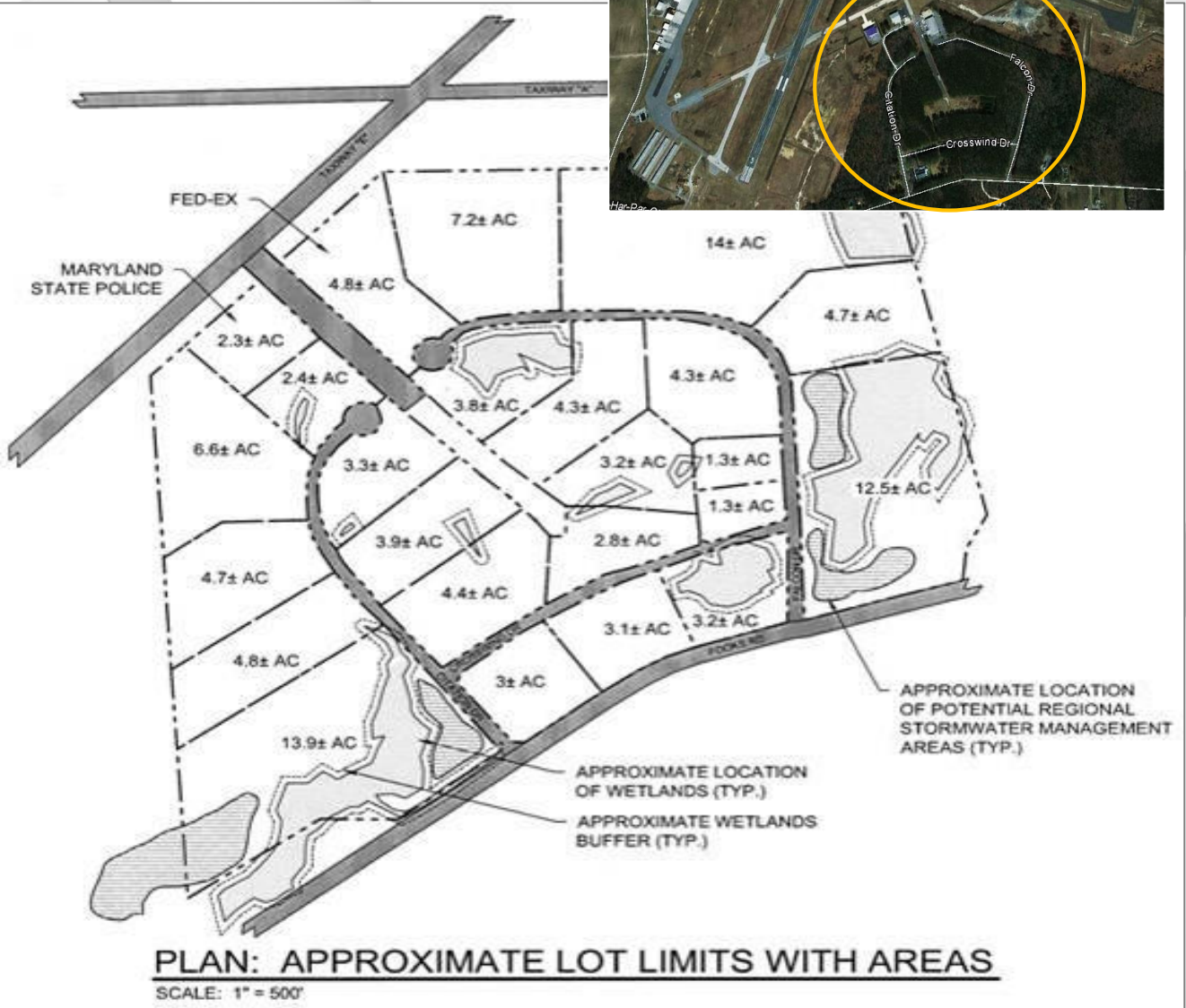
Development Opportunities



- Parcel A- Large scale hangar complex
- Parcel B- Corporate hangars
- Parcel C- Solar Farm

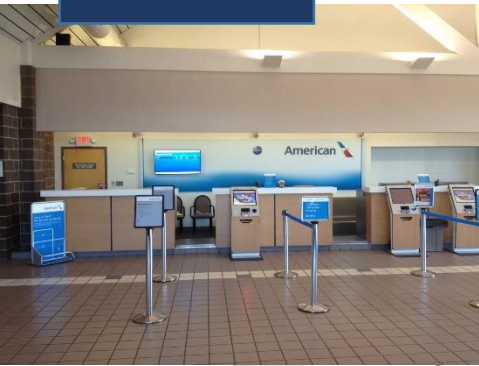


Development Opportunities





Inside Terminal Opportunities



- Reach over 125,000 people annually through our display advertising program
- Feature your company and products in our display case
- Establish an office, café or small business inside the terminal building

Contact Information



Dawn Veatch
Airport Manager
410-548-4827
dveatch@wicomicoounty.org



David Ryan
Executive Director
410-749-1251
info@swed.org